




MOUNTKIT

**BORN ON THE ROOF.
NOT IN A LAB.**
Professional solar
mounting system

Manufacturer:  **ENERACK**



ISO 9001: 2015 quality management system certified

THE BACKBONE OF THE SOLAR PANEL SYSTEM

From experience, we know how critical it is for a solar mounting structure to be quick and simple to install, reliably robust, and offer outstanding value for money. Mountkit's professional mounting solutions provide suitable fixing systems for all roof types.

Mountkit's mission is to ensure our systems meet the highest technical standards while delivering long-term performance. Easy handling, intuitive design, and straightforward installation all contribute to a fast and cost-efficient installation process.

We believe safety should never be in question – which is why we provide detailed installation report with static calculations for flat roof installations, helping to ensure full compliance with the strictest regulations. Our commitment to durability, reliability, and speed gives our clients full confidence in every Mountkit system.



Outstanding value for money



Permanent stock with CE and TÜV certification



Lightning fast and easy assembly



Long life - 10 years warranty



Durable, stable construction



Aluminium quality certificate



TILE ROOF

Mountkit offers a wide range of tile roof mounting structures compatible with various tile types:

- standard tiles
- flat tiles
- slate tiles

These systems are designed with key technical features to reduce inventory costs and enable fast, straightforward installation. The innovative rail-connect base support increases structural strength and ensures safe operation. With a broad product selection, Mountkit offers the flexibility to adapt to different installation scenarios and on-site conditions.



TECHNICAL FEATURES	
Product name	Tile roof mounting system
Application	Standard tile, flat tile, slate tile roofs
Inclination	Parallel to the roof
Material	AL 6005-T5, SUS 304
Finish	AL 6005-T5 Anodized, SUS 304 Shot blasted
Module orientation	Landscape or Portrait

TILE ROOF ATTACHMENT

Description Tile Roof Hook - Fix 1



Description Tile Roof Hook - Adjustable 2



Description Tile Roof Hook - Adjustable 3



Description Flat Tile Roof Hook - Fix 4



Description Rail Clamp Hook - Rail Adapter with Nuts 5



Description Mounting Rails 3.5 m Side Mounted 6



Description Mounting Rails 4.2 m Side Mounted 7



Description End-Clamp 30-40 mm Silver 8



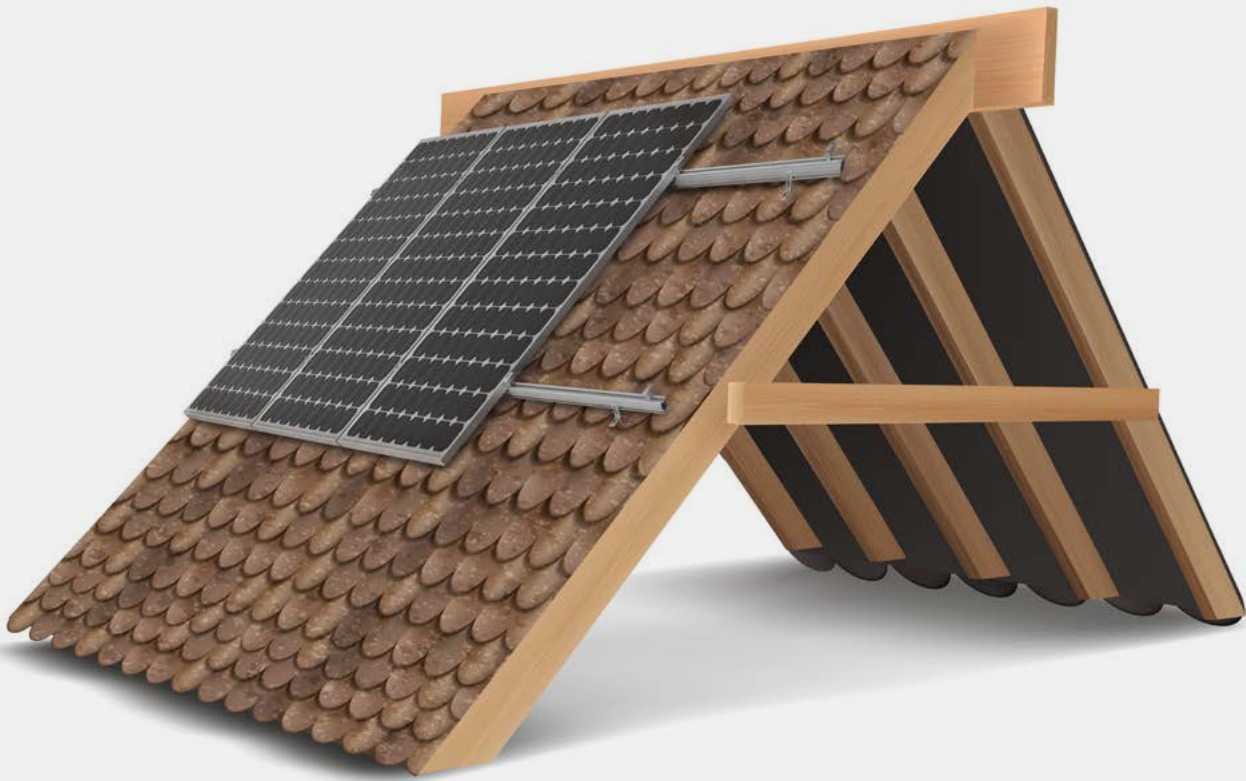
Description Mid-Clamp with Earthing Plate 9



SHINGLE ROOF

Mountkit offers a wide range of mounting structures for shingle roofs, compatible with various shingle types including asphalt shingles. The uniquely designed mid and end clamps are suitable for solar modules with a thickness of 30–40 mm.

With key technical features considered, our design helps reduce inventory costs and supports quick and simple installation. The innovative rail-connect base support significantly enhances structural strength and ensures safe use.



SHINGLE ROOF ATTACHMENT

Description Mini Rail 26 mm

1



Description Mini Rail 385 mm

2



Description Hanger Bolt 10×200 + Plate

3



Description Shingle Roof L Fleet

4



Description Mounting Rails
3.5 m Side Mounted

5



Description Mounting Rails
4.2 m Side Mounted

6



Description End-Clamp 30-40 mm -
Silver

7



Description Mid-Clamp with Earthing Plate -
Silver

8

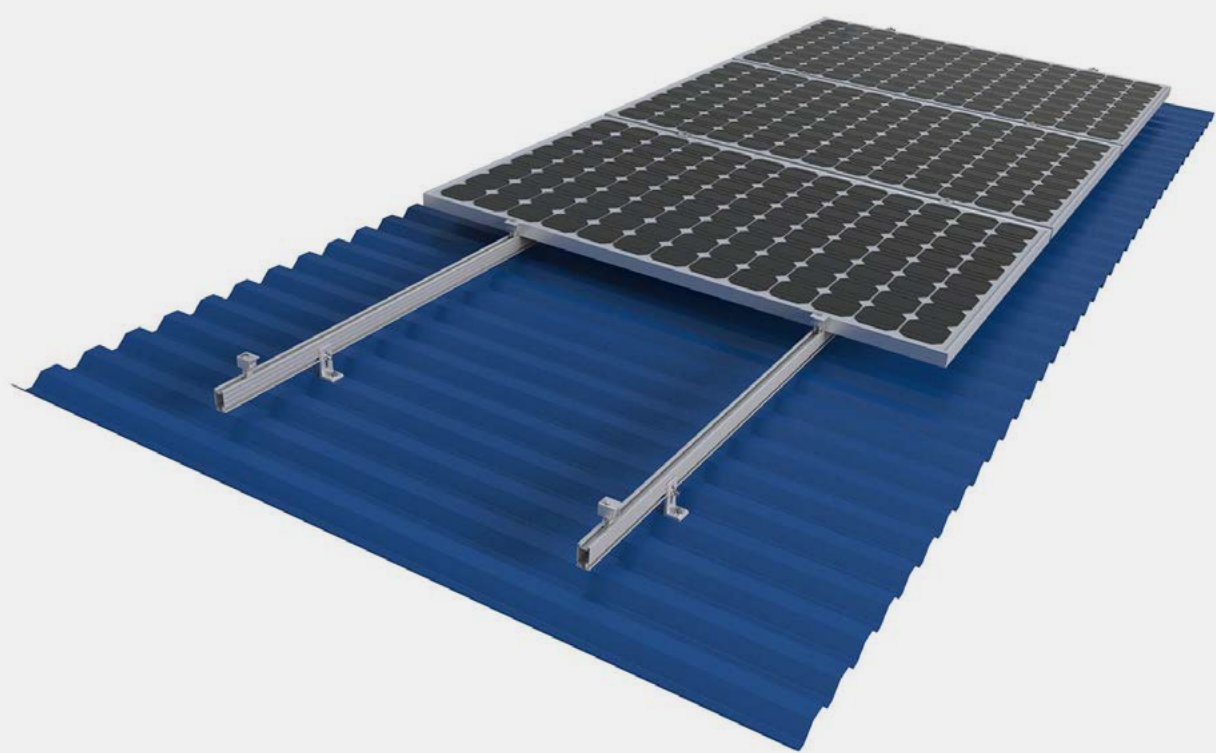


METAL ROOF

Mountkit metal roof systems offer two fixing methods:

- 1. Drill-fixed components such as L-feet brackets, hanger bolts and hooks.
- 2. Standing seam clamps for direct mounting without penetrating or damaging the roof covering.

Our design, based on key technical parameters, helps reduce inventory costs and supports fast, straightforward installation. The innovative rail-connect base support enhances structural strength and ensures safe operation. Mountkit provides a wide selection of brackets for metal roofs, with customisation options to suit specific installation requirements.



TECHNICAL FEATURES	
Product name	Metal roof mounting system
Application	Metal roof
Inclination	Parallel to the roof
Material	AL 6005-T5, SUS 304, EPDM
Finish	AL 6005-T5 Anodized, SUS 304 Shot blasted
Module orientation	Landscape or Portrait

METAL ROOF ATTACHMENT

Description Mini Rail 26 mm 1



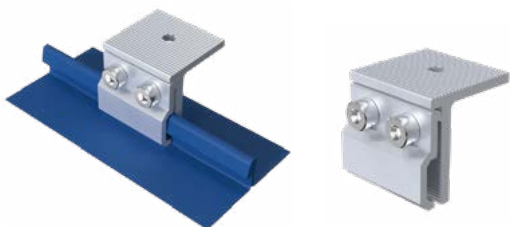
Description Mini Rail 385 mm (with bolt) 2



Description Rail R60 3000 mm for Trapezoidal Sheet 3



Description Standing Seam Clamp 4



Description Extended Stainless Steel Standing Seam Clamp 5



Description Rail Clamp Hook - Rail Adapter Nuts 6



Description Shingle Roof L Feet 7



Description Mounting Rails 3.5 m - Side Mounted 8



Description Mounting Rails 4.2 m - Side Mounted 9



FLAT ROOF

The Flat10 system is a flat-roof solution with a 10° tilt, installed in either south-facing or east-west configuration. Panels are mounted on their short sides, reducing the number of components needed for installation. Depending on panel size or wind/snow loads, the system can be supplemented with additional support legs. All panels are interconnected via rails, forming a continuous structure that offers enhanced resistance to environmental loads.

- Compatible with various roof surfaces:
- Concrete roofs
 - Membrane roofs (with rigid or soft insulation)
 - Bitumen roofs
 - Gravel-covered roofs

Made from extruded aluminium and secured with stainless steel fasteners, the system ensures durability and long service life without the need for welding or chemical anchoring – helping to prevent roof damage. Where needed, only EPDM rubber makes contact with the roof surface, increasing friction and compensating for unevenness. In addition, the modular design enables fast and straightforward installation, reducing labour time and costs.



TECHNICAL FEATURES	
Product name	Mountkit Flat10
Application	Flat roof
Tilt	10°
System Material	Extruded aluminum profile, AL 6005 T5
Fastener material	Stainless steel SUS 304, EPDM
Finish	Anodized
Module orientation	Landscape

Description Mountkit FLAT10 Front Leg

1



Description Mountkit FLAT10 Back Leg

2



Description Mountkit FLAT10 Ballast Tray

3



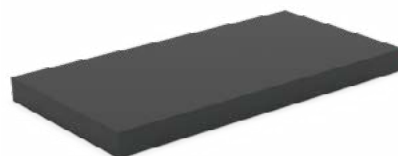
Description Mountkit FLAT10 Windshield 2400 mm

4



Description Mountkit FLAT10 Rail End Cover Cap
EPDM Rubber
200×100×15mm

5



Description Mountkit FLAT10 End Clamp Kit for 30 mm

6



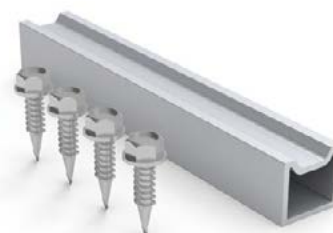
Description Mountkit FLAT10 Mid-Clamp with Earthing Plate

7



Description Mountkit FLAT10 Extender

8



Description Mountkit FLAT10 Support Front Leg

9



Description Mountkit FLAT10 Support Back Leg

10

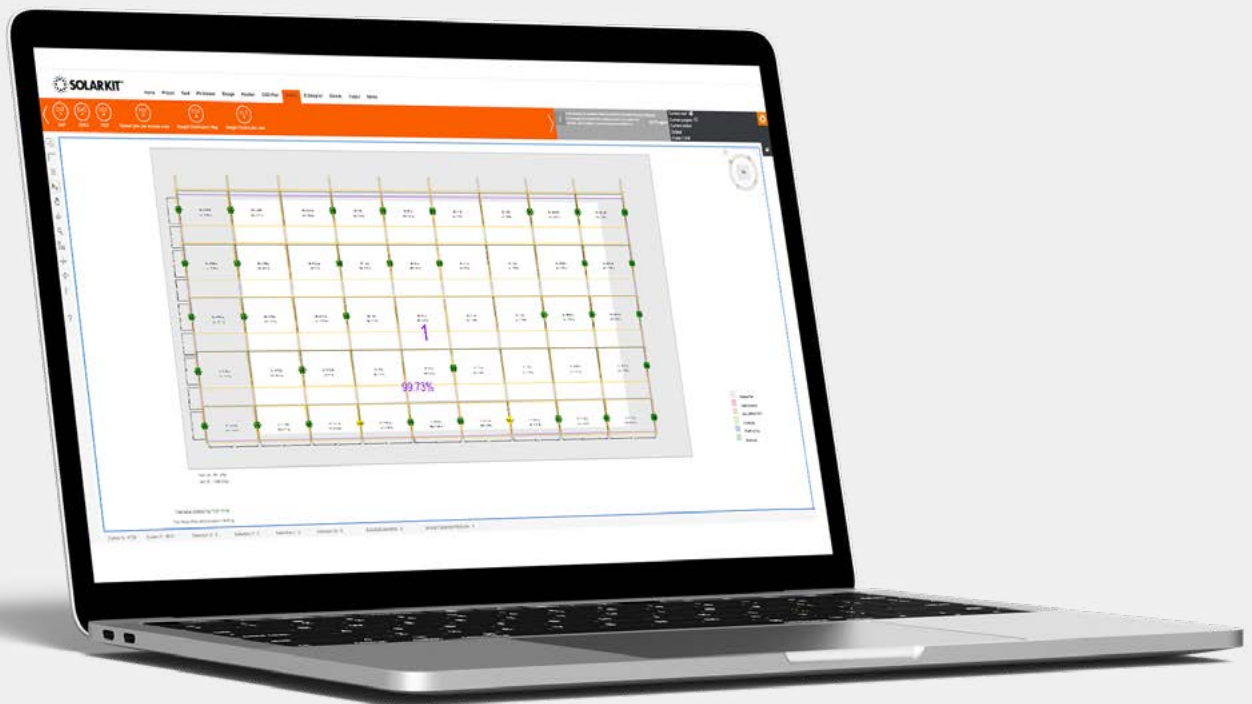


STATIC CALCULATIONS FOR MOUNTKIT FLAT ROOF SYSTEMS

For modern solar installations, ensuring optimal performance, structural stability, and avoiding excessive load on the roof structure is essential. An increasing number of countries now require a structural load analysis for PV mounting systems to ensure proper ballast configuration aligned with national standards and local site conditions.

Such documentation is also frequently required for subsidy applications, making an official structural calculation a key prerequisite to qualify for certain grants.

The professional installation report by Mountkit precisely determines the required ballast for safe installation and reliable, long-term system performance.



WHAT IS INCLUDED IN THE MOUNTKIT PROJECT REPORT?

Our static analysis not only helps determine the exact ballast requirements but also provides comprehensive installation guidance for your team.



Detailed installation report: We provide a complete layout for each installation, including the exact quantity of each component and precise millimeter-level spacing instructions.



Ballast placement map: Installers receive a visual map indicating the exact positioning and quantity of ballast required. Calculations are based on local wind and snow conditions, as well as sliding forces. Validation and roof capacity checks remain the client's responsibility.



Complete project report: We provide a full project summary containing all calculated figures, installation conditions, and data required for structural verification.



Wind Tunnel Testing: Wind tunnel testing is a key part of our design process. It enables accurate measurement of the forces acting on the system, such as uplift and sliding, based on real-world wind and snow scenarios. This allows for more precise ballast design than what national standards alone would recommend, ensuring system stability in all environmental conditions.



Why is it essential for the client to verify the load-bearing capacity of the roof?

The weight and forces determined by your custom mounting system must always be assessed by the client in consultation with a person licensed in the country of use (e.g.: architectural engineer, structural engineer). While we provide all necessary technical data, the final responsibility for verifying the roof's load-bearing capacity lies with the structural engineer.

RAIL & ACCESSORIES

To meet the demands of different markets, customer preferences, and project budgets, we offer a wide range of rail and fastening components tailored to various installation requirements. All our products undergo rigorous strength calculations and are tested by third parties such as SGS. They are TÜV- and CE-certified to ensure the highest quality and reliability.



Description Rail Connector with Screw

1



Description Rail End Cap made of EPDM Rubber

2



RAIL & ACCESSORIES

Description Mounting Rails
3.5m Side Mounted

3



Description Mounting Rails
4.2m Side Mounted

4



Description Mid-Clamp -
Black

5



Description Mid-Clamp with Earthing Plate -
Silver

6



Description End-Clamp 30-40 mm -
Silver

7



Description End Clamp for 35 mm -
Silver

8



Description Earthing Lug Kit

9



Description Rail Fixing Screw Set

10



Description Cable Clip for PV Panels -
2 Cables

11



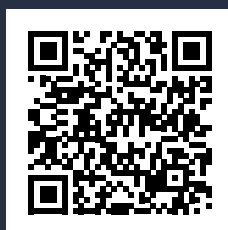
Description Cable Clip for PV Panels -
4 Cables

12





Become our partner



mountkit.eu
info@mountkit.eu

Official Distributor



shop.solar-kit.eu